

Mazda MX-5 - NB

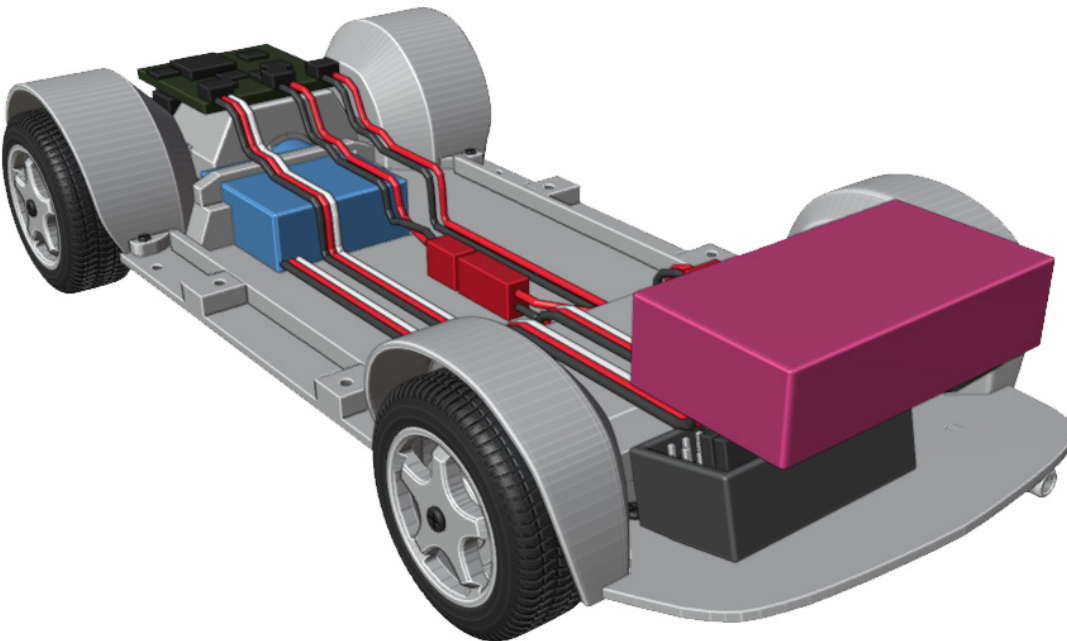
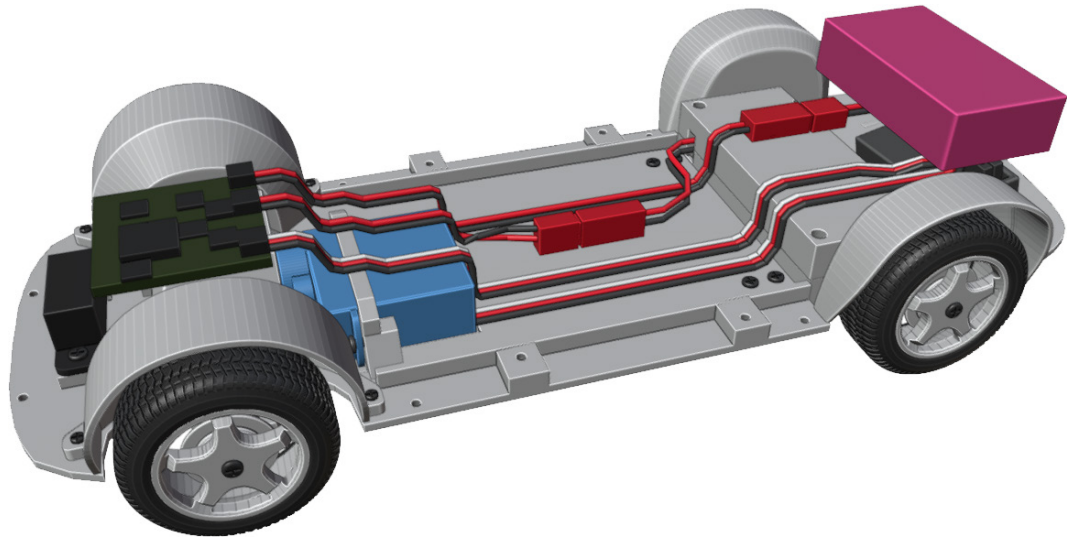
1:24 scale, fully 3D printed on FDM



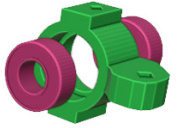
More models at:

www.3drcmodels.com

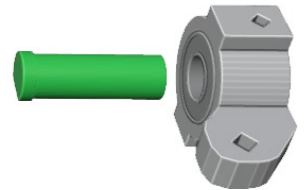
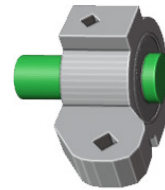
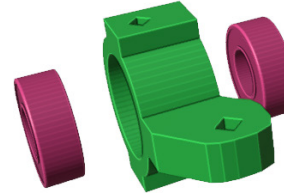
1. Chassis



4x 3x6x2.5mm bearings has to fit tightly



1

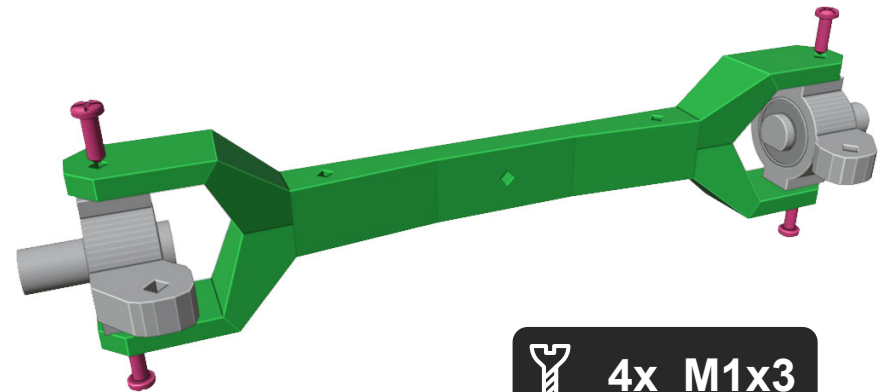


2



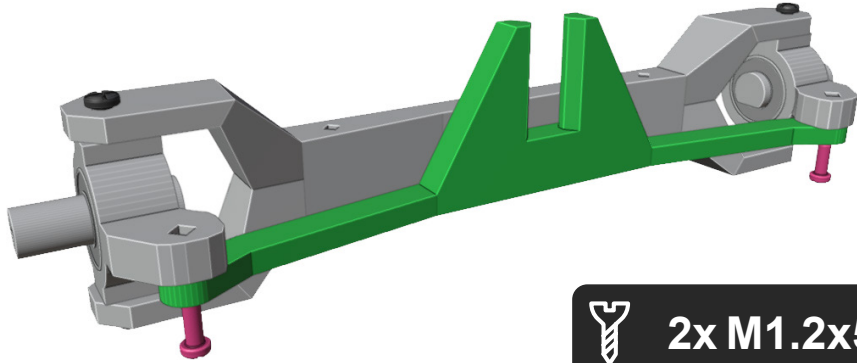
Shaft has to fit tightly

3



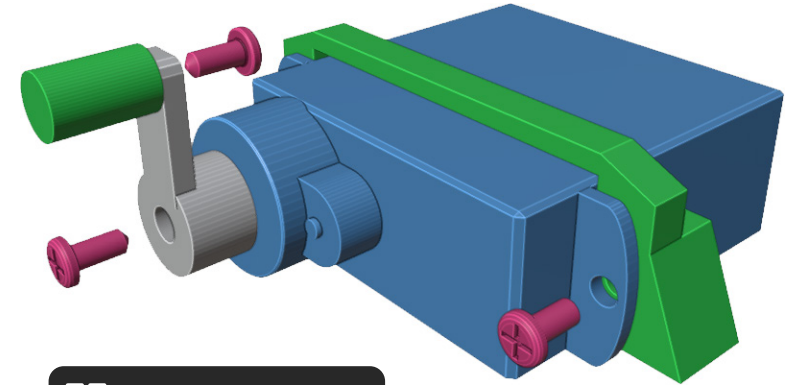
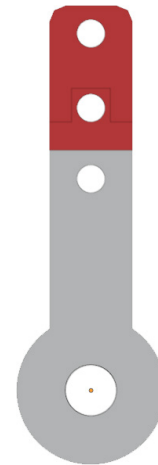
4x M1x3

4



 2x M1.2x5

6

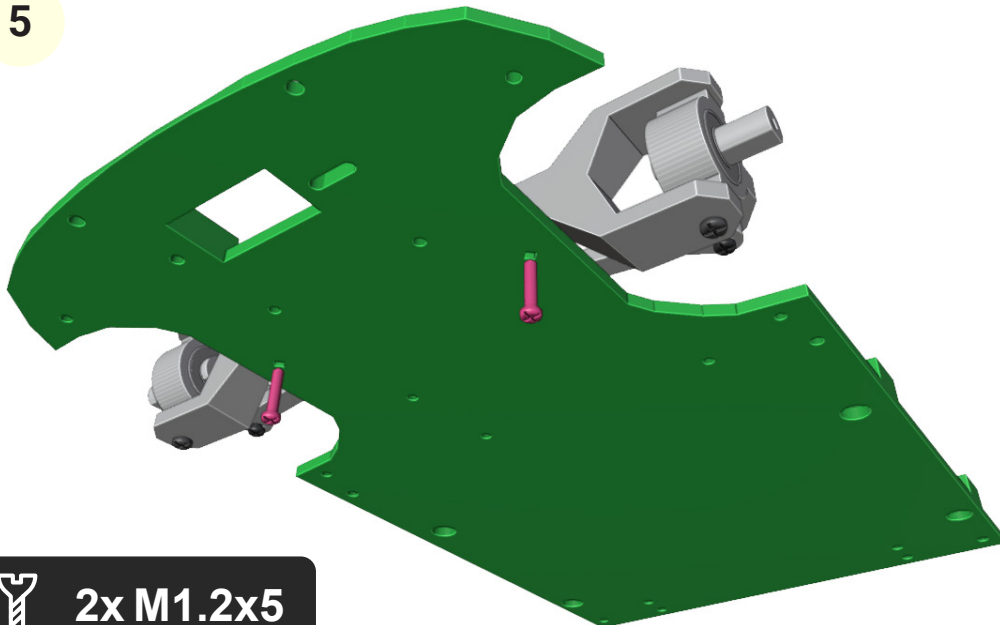


 3x M1.2x4



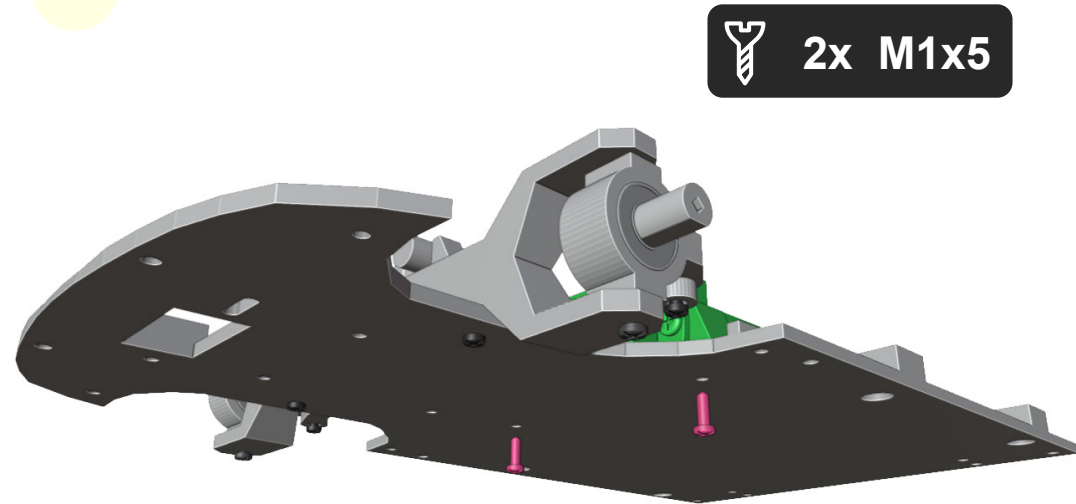
You need to cut red part of steering pin so it fits under cover.

5

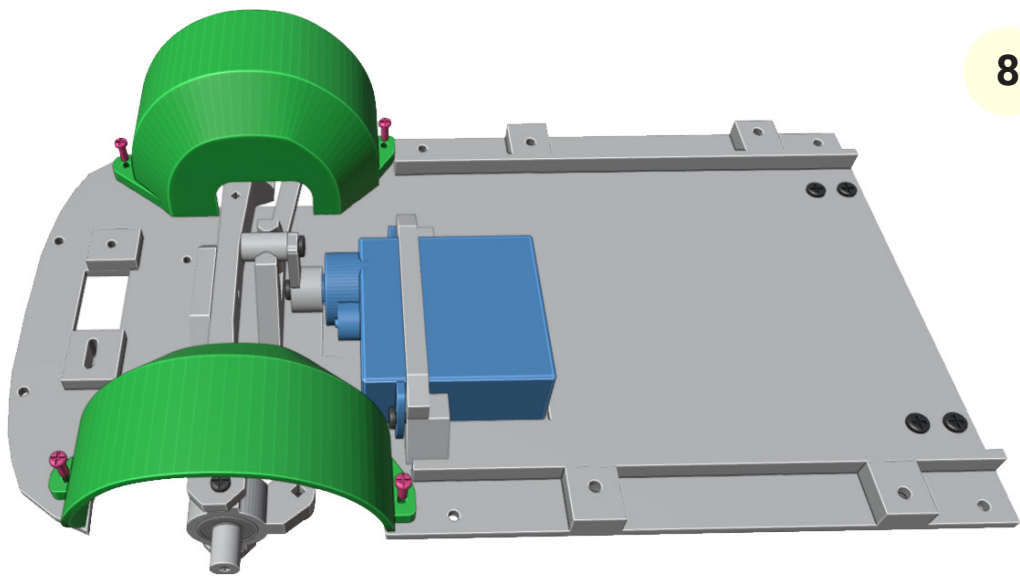


 2x M1.2x5

7

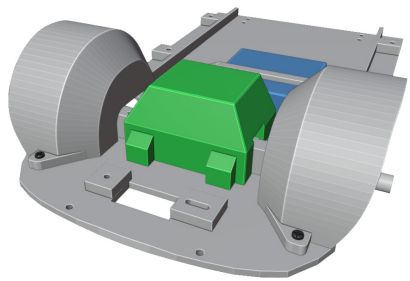


 2x M1x5



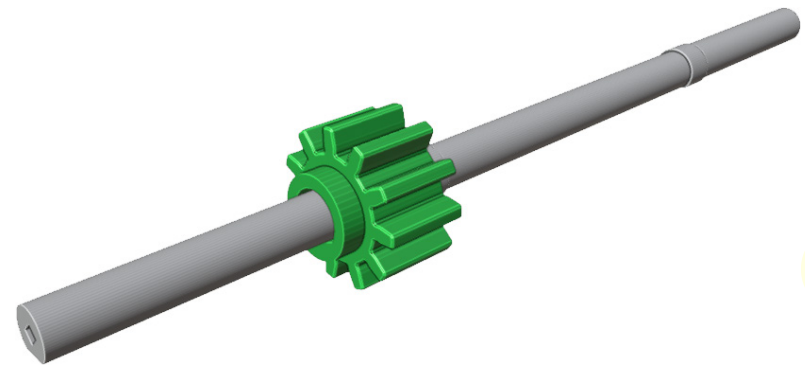
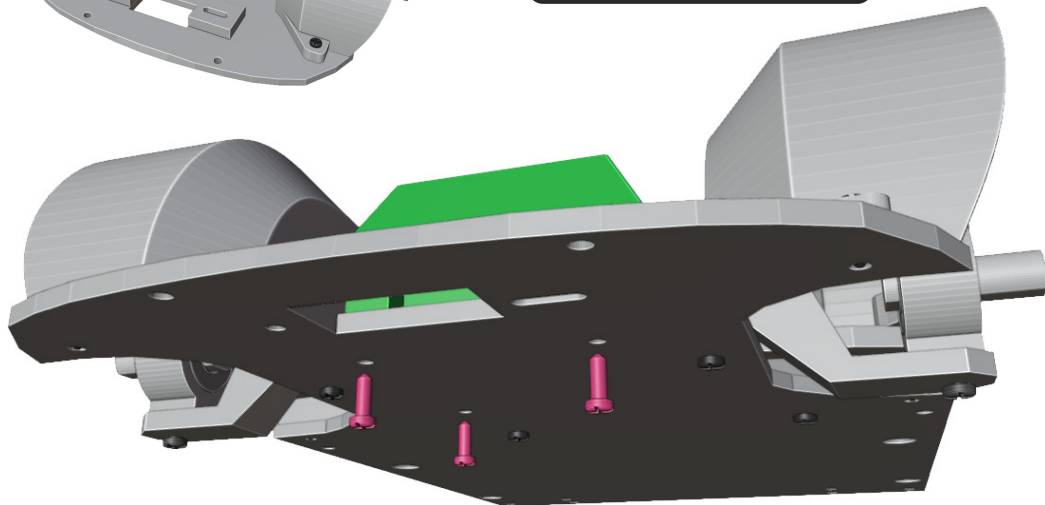
8

 2x M1x3

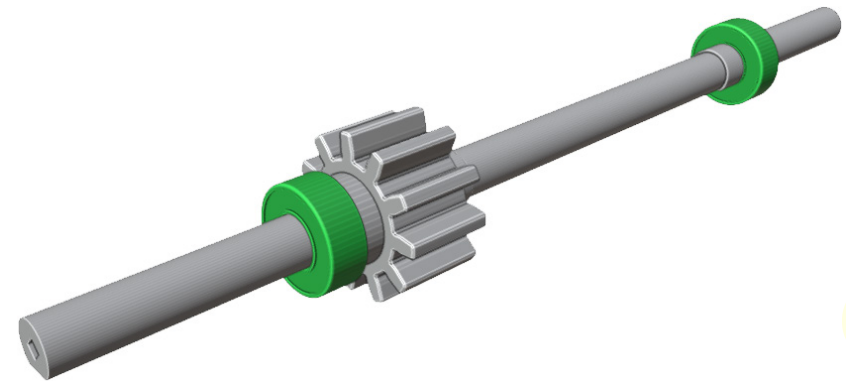


9


 3x M1x4

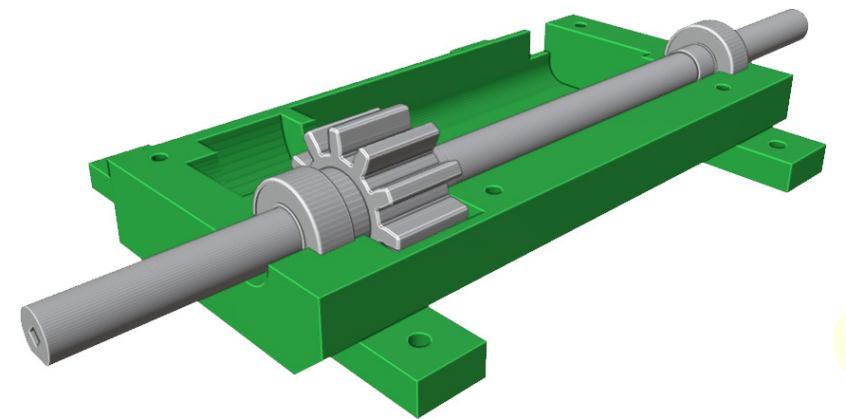


10

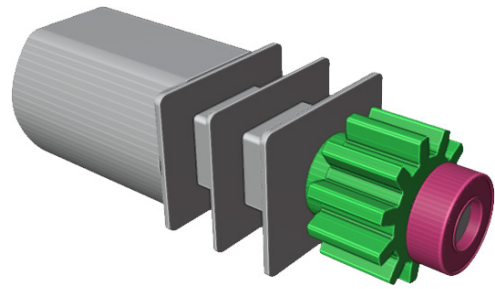


11

 2x 3x6x2.5mm bearings has to fit tightly



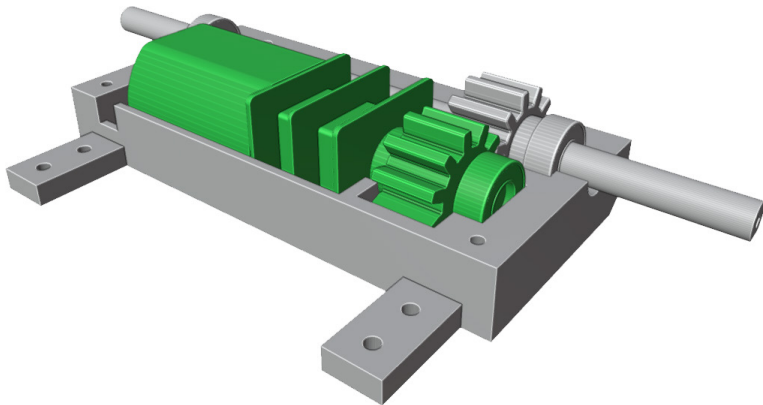
12



13



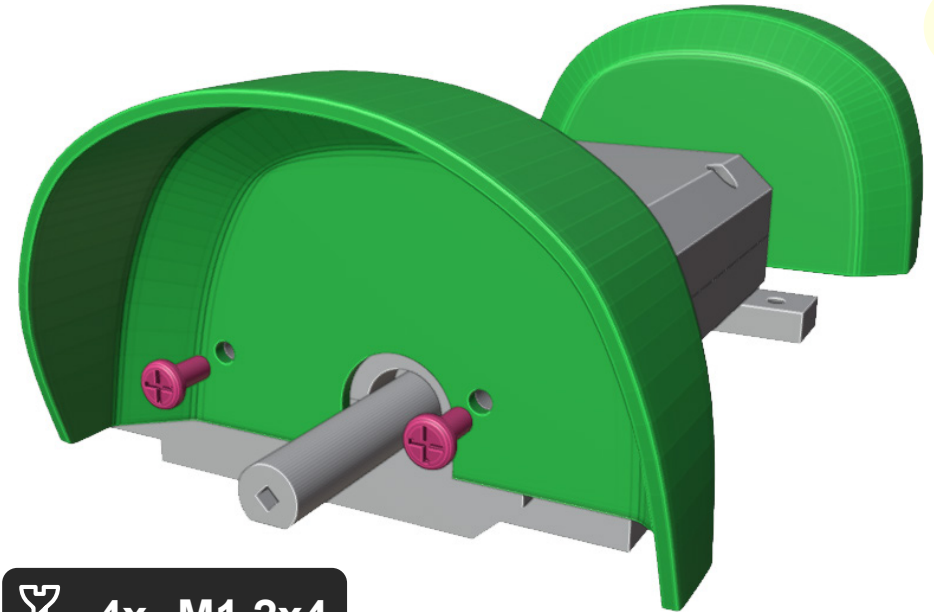
You can choose motor RPM.
For faster driving use 500 -
1000 RPM. I have used 1000
RPM.



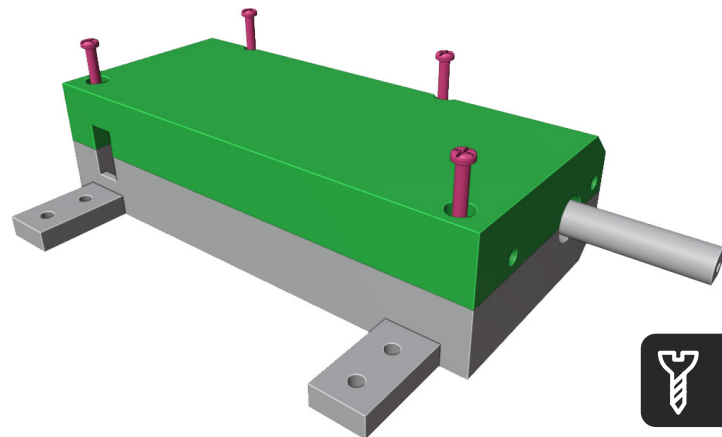
14



4x M1.2x4



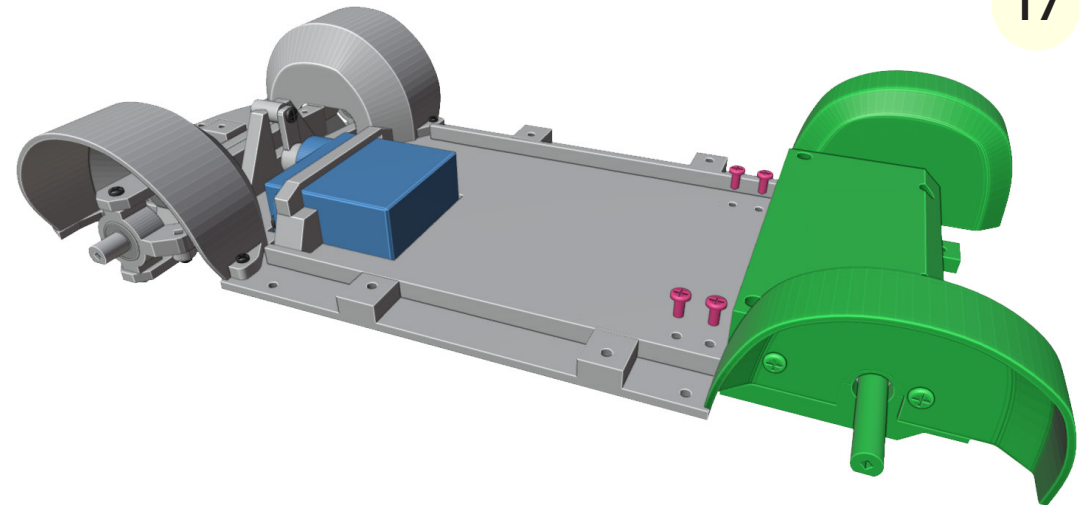
16



15



4x M1x5

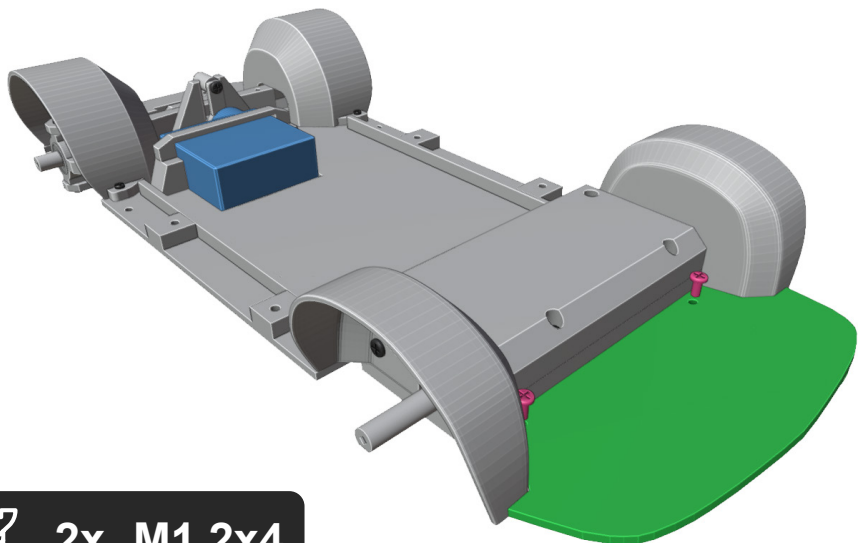


17



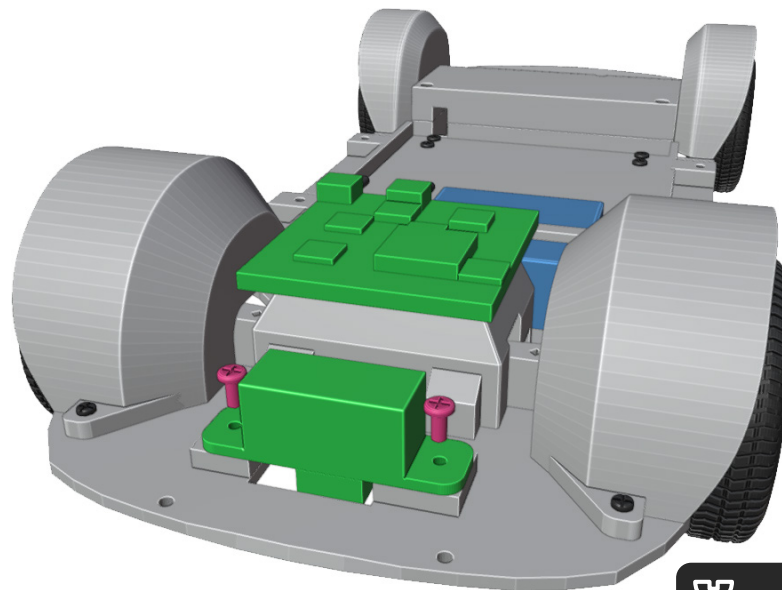
4x M1.2x4

18



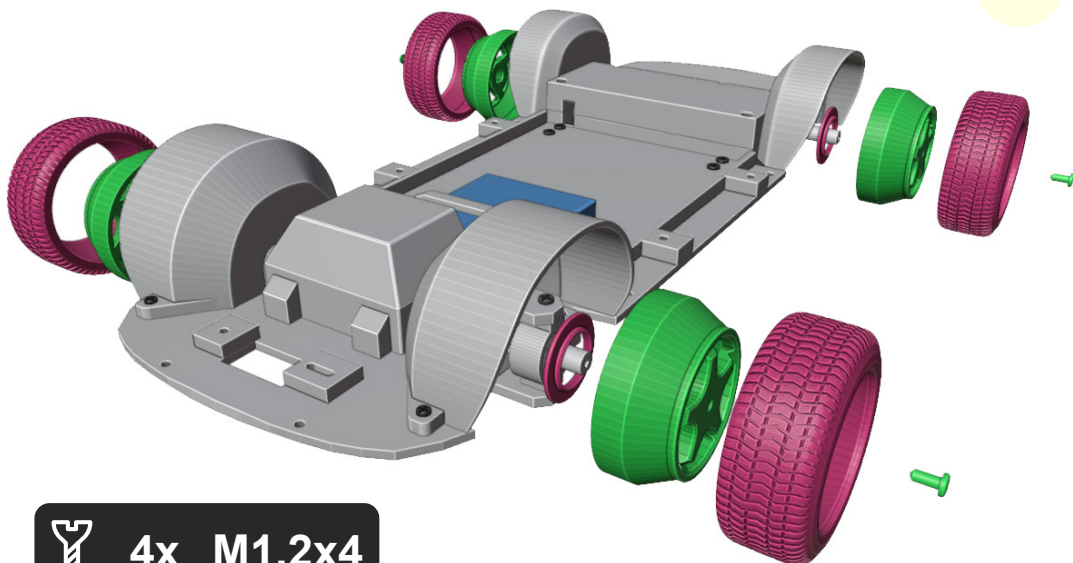
 2x M1.2x4

20



 2x M1.2x3

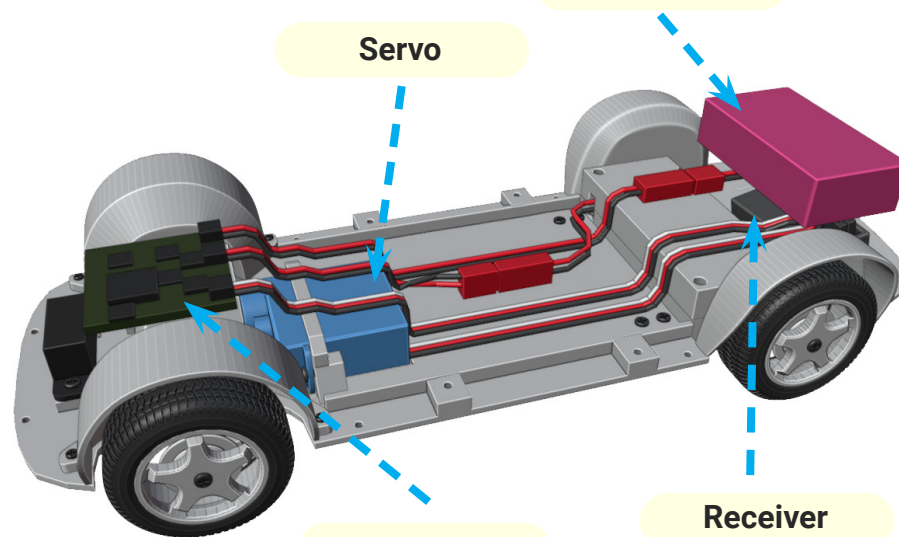
19



 4x M1.2x4

Battery

Servo



ESC

Receiver

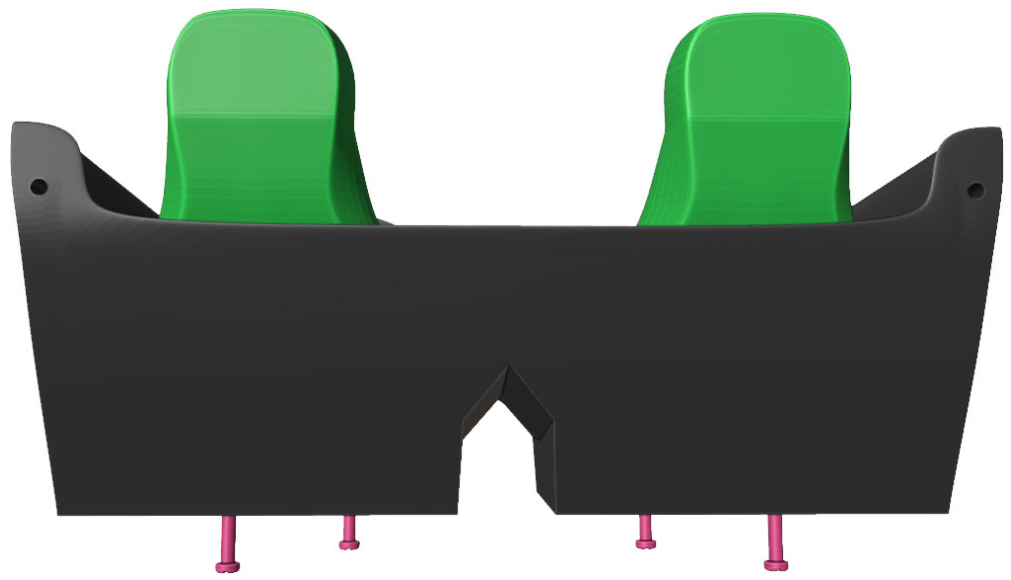
21

2. Interior

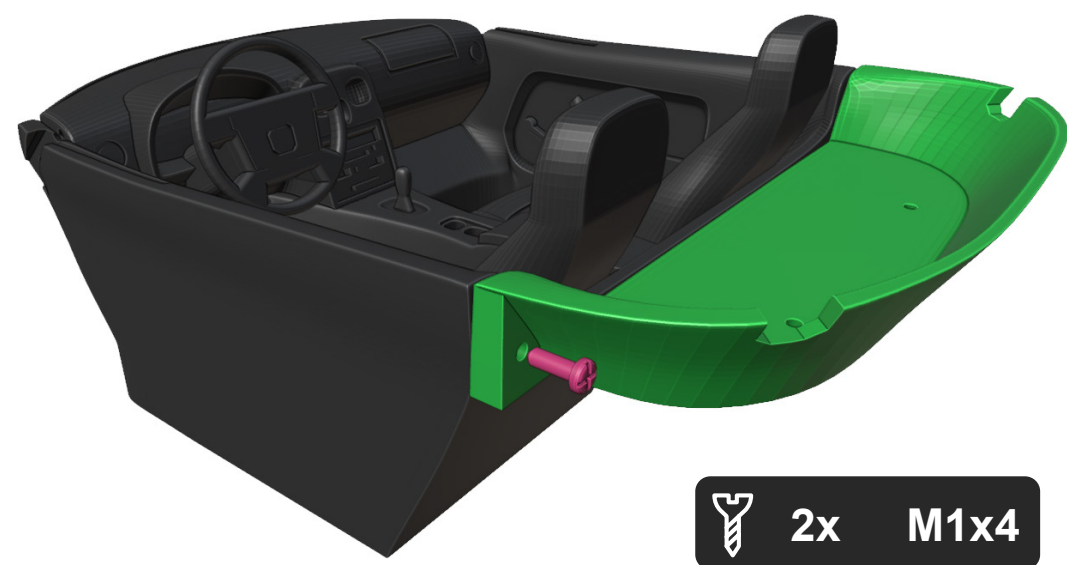


22

 4x M1.2x4



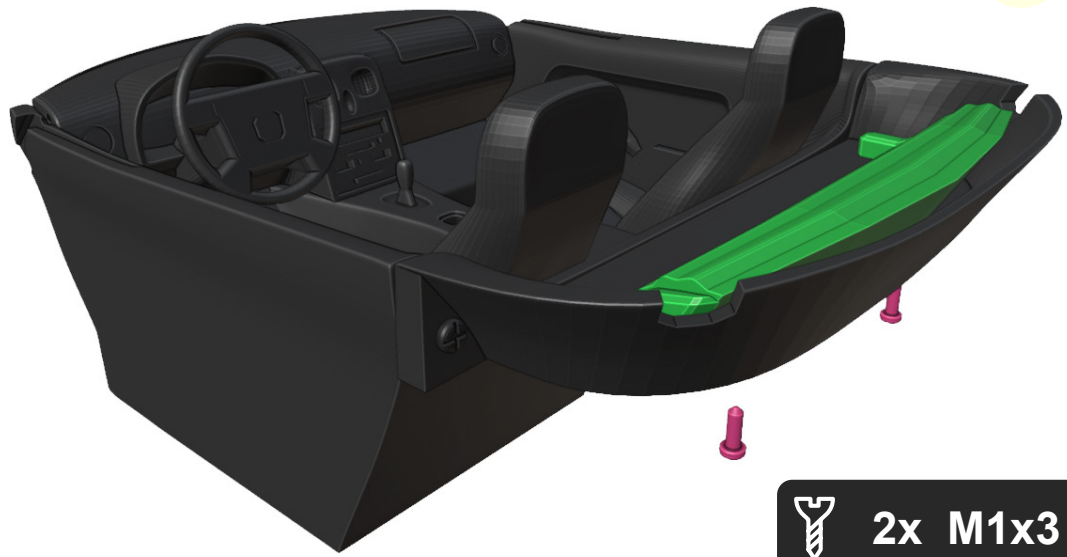
23



24

 2x M1x4

25



 2x M1x3

27

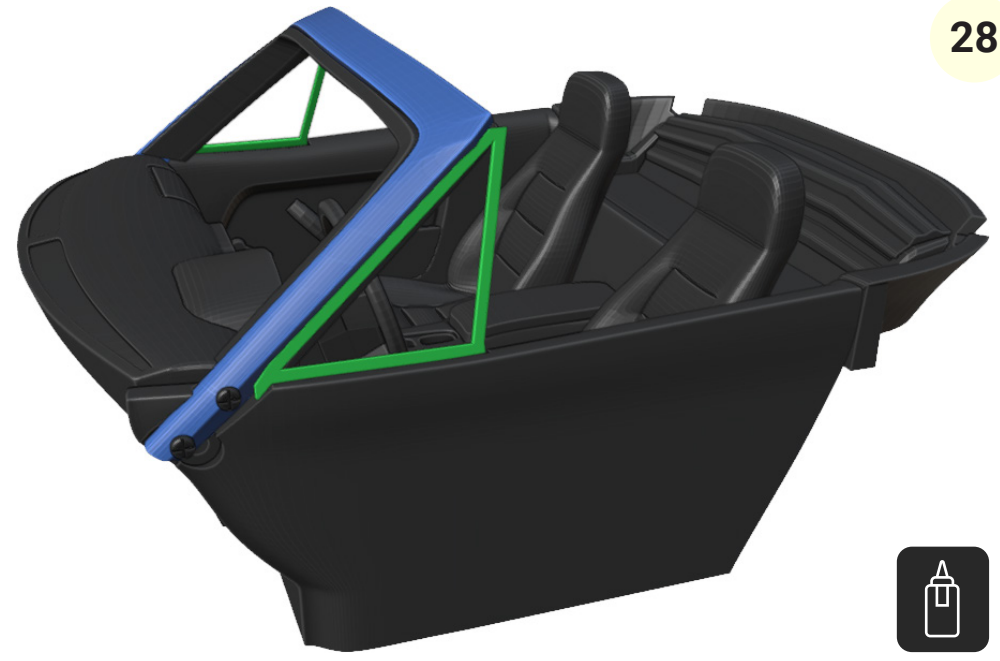


 4x M1.2x3

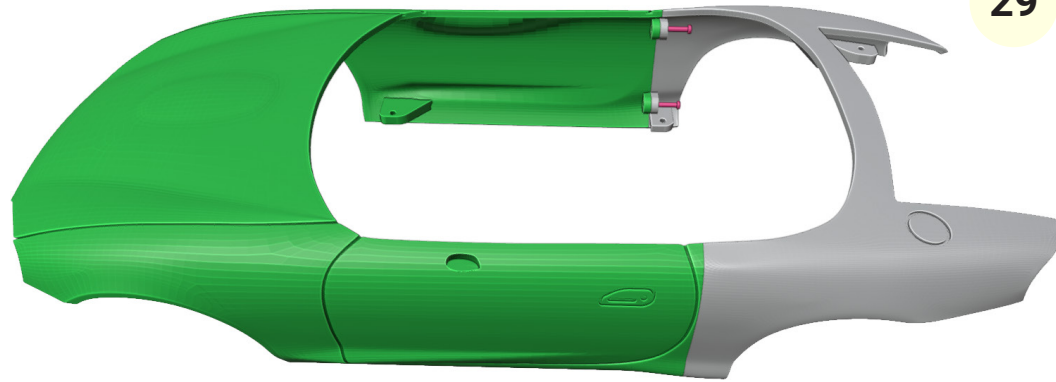
26



28

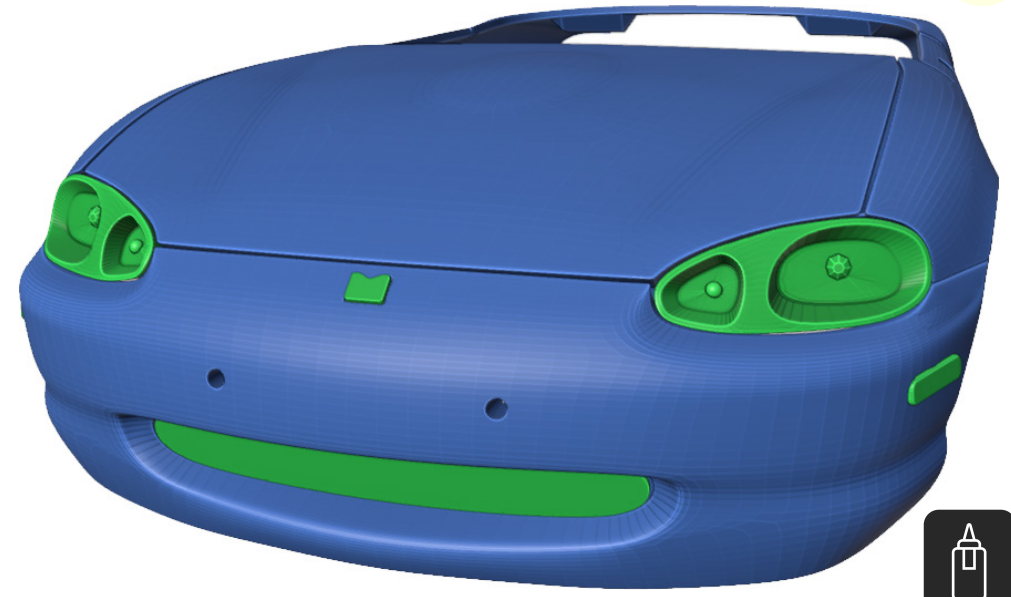


3. Body

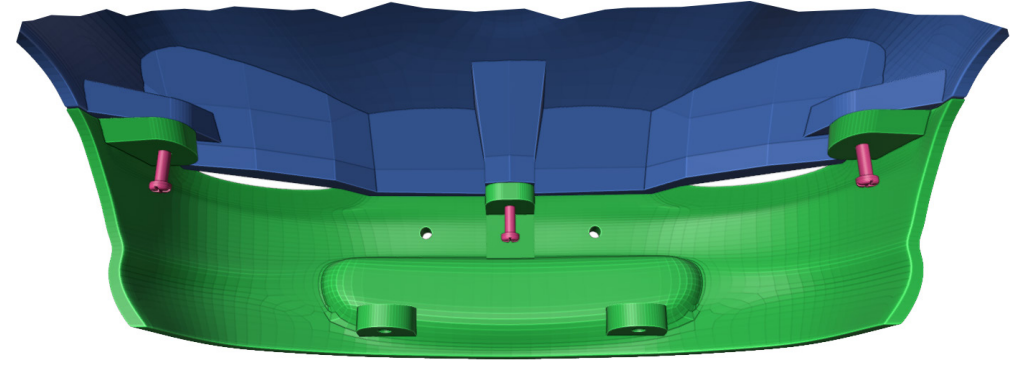


29

 4x M1x5

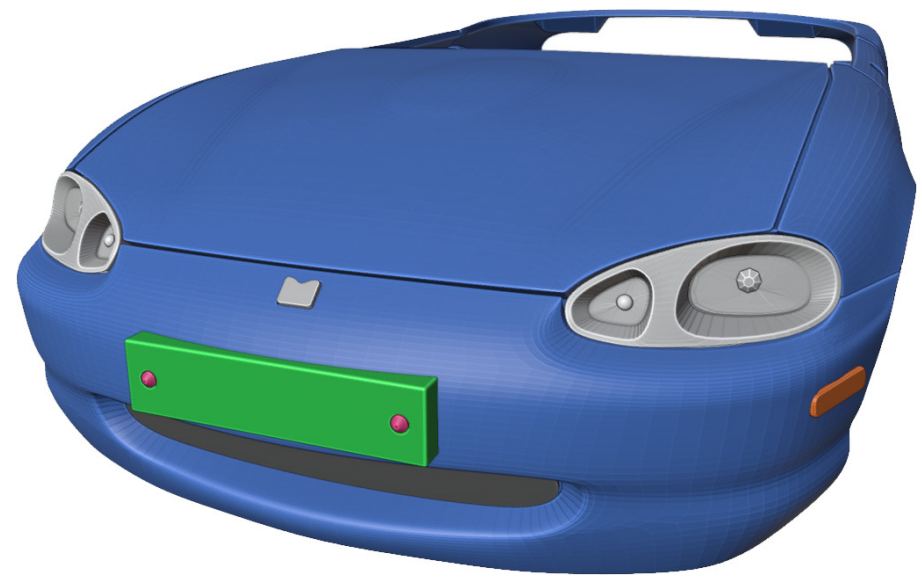


31



30

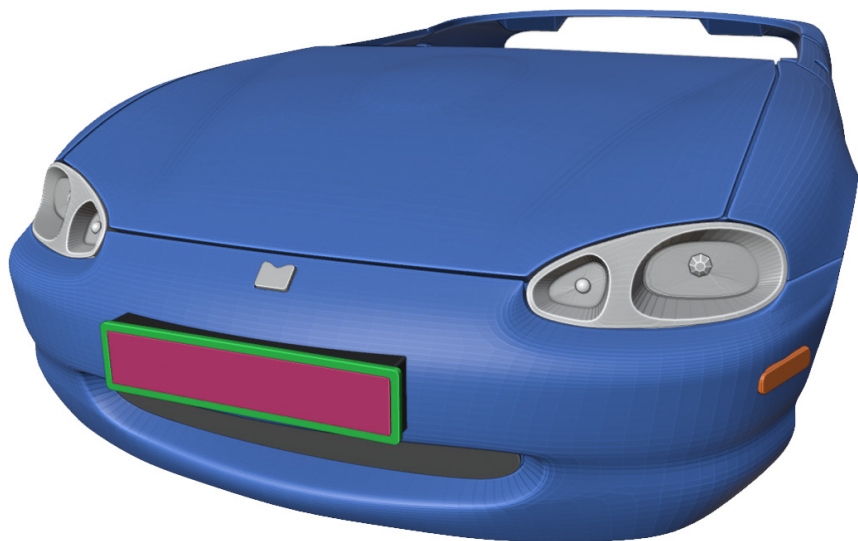
 3x M1x5



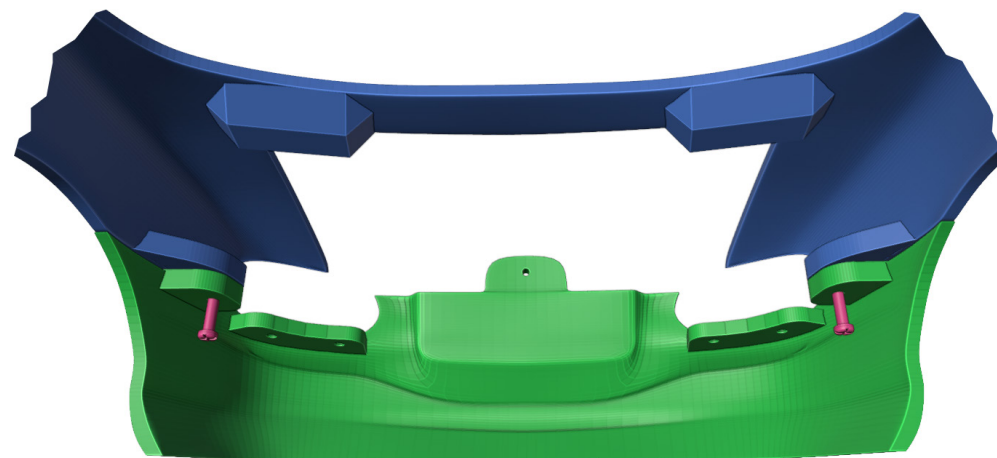
32

 2x M1x4

33

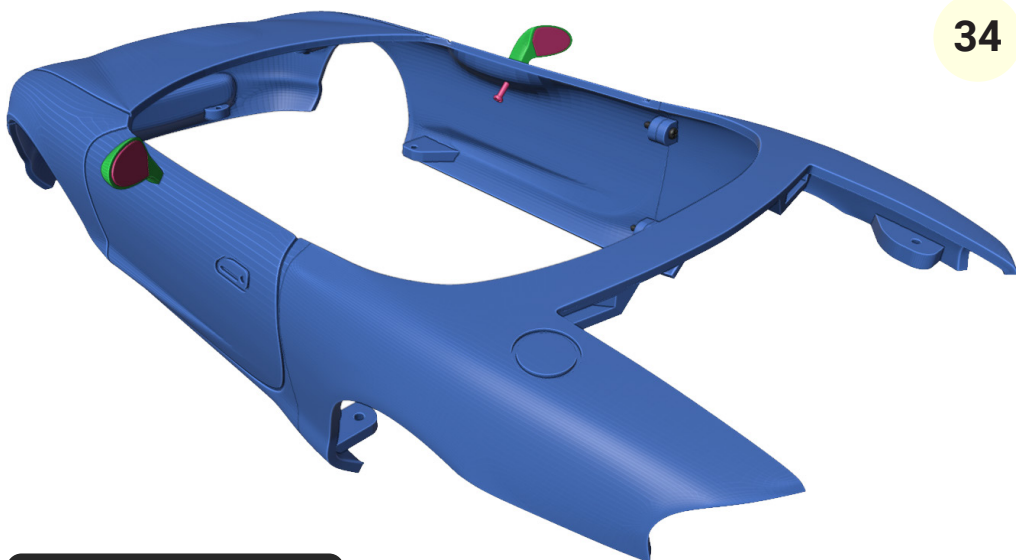


35



 2x M1x5

34



 2x M1x5

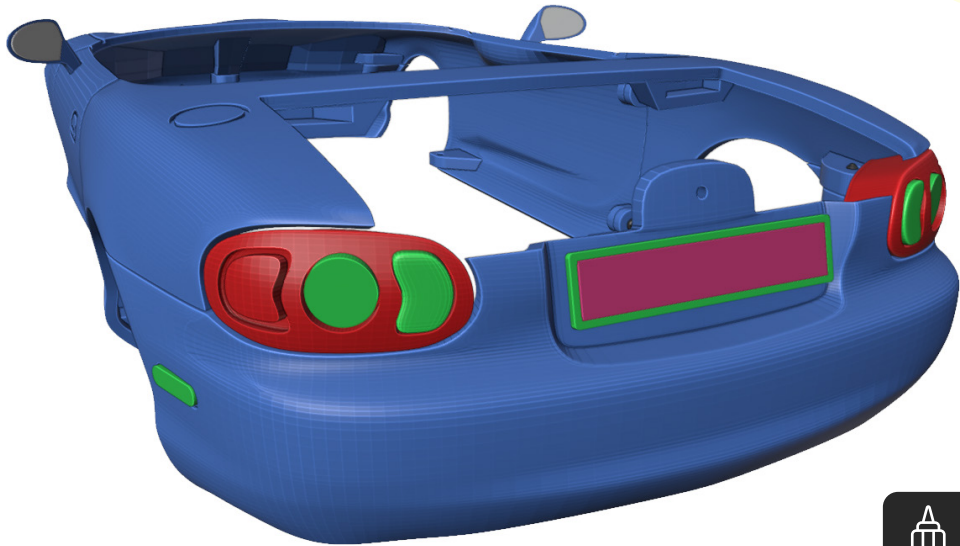


36

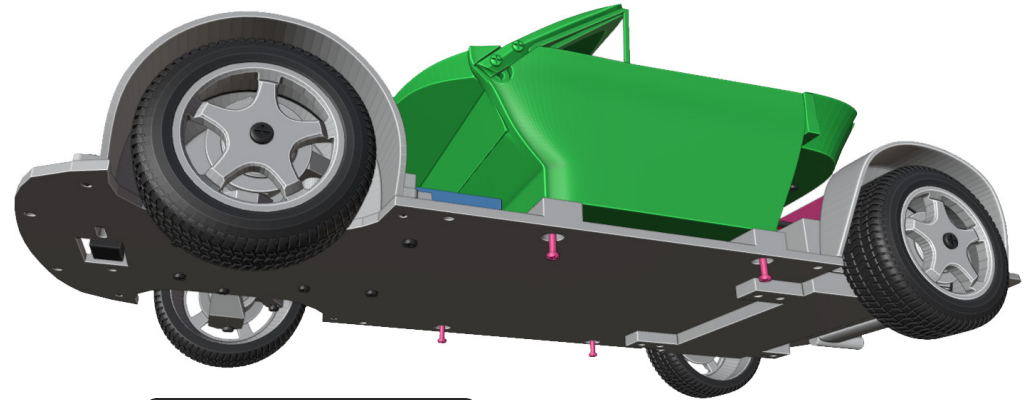
 4x M1x4



37

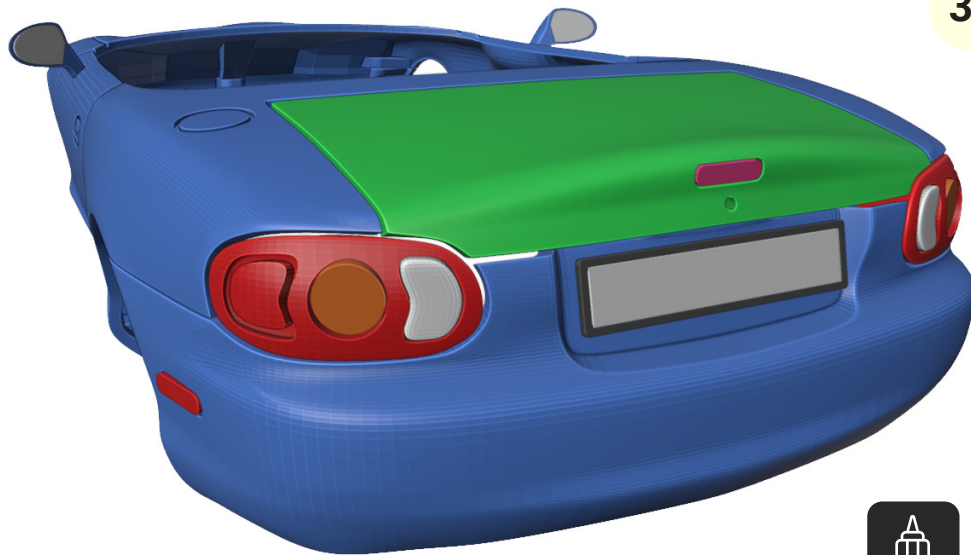


39

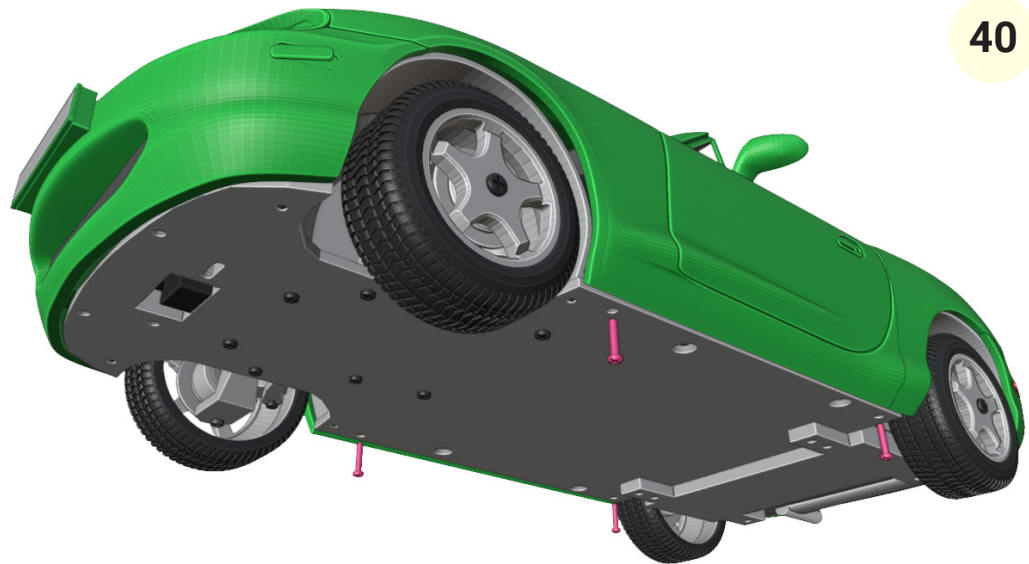


 4x M1x5

38



40



 4x M1x5



Great job! We are done...

Hope you enjoyed the build
and for more models, visit:

3drcmodels.com and
youtube.com/@3DRcModels

